



ErisTerminal® SIP Deskset

VSP735

**Quick Start Guide**



# Important Safety Information



This symbol is to alert you to important operating or servicing instructions that may appear on the product or in this user's manual. Always follow basic safety precautions when using this product to reduce the risk of injury, fire, or electric shock.

## Important Safety Instructions

---

When using your telephone equipment, basic safety precautions should always be followed to reduce the risk of fire, electric shock and injury, including the following:

1. This product should be installed by a qualified technician.
2. This product should only be connected to the host equipment and never directly to the network such as Public Switch Telephone Network (PSTN) or Plain Old Telephone Services (POTS).
3. Read and understand all instructions.
4. Follow all warnings and instructions marked on the product.
5. Unplug this product from the wall outlet before cleaning. Do not use liquid or aerosol cleaners. Use a damp cloth for cleaning.
6. Do not use this product near water such as near a bath tub, wash bowl, kitchen sink, laundry tub or swimming pool, or in a wet basement or shower.
7. Do not place this product on an unstable table, shelf, stand or other unstable surfaces.
8. Slots and openings in the back or bottom of the telephone base and handset are provided for ventilation. To protect them from overheating, these openings must not be blocked by placing the product on a soft surface such as a bed, sofa or rug. This product should never be placed near or over a radiator or heat register. This product should not be placed in any area where proper ventilation is not provided.
9. This product should be operated only from the type of power source indicated on the marking label. If you are not sure of the type of power supplied at the premises, consult your dealer or local power company.
10. Do not allow anything to rest on the power cord. Do not install this product where the cord may be walked on.
11. Never push objects of any kind into this product through the slots in the telephone base or handset because they may touch dangerous voltage points or create a short circuit. Never spill liquid of any kind on the product.

12. To reduce the risk of electric shock, do not disassemble this product, but take it to an authorized service facility. Opening or removing parts of the telephone base or handset other than specified access doors may expose you to dangerous voltages or other risks. Incorrect reassembling can cause electric shock when the product is subsequently used.
13. Do not overload wall outlets and extension cords.
14. Unplug this product from the wall outlet and refer servicing to an authorized service facility under the following conditions:
  - A. When the power supply cord or plug is damaged or frayed.
  - B. If liquid has been spilled onto the product.
  - C. If the product has been exposed to rain or water.
  - D. If the product does not operate normally by following the operating instructions. Adjust only those controls that are covered by the operation instructions. Improper adjustment of other controls may result in damage and often requires extensive work by an authorized technician to restore the product to normal operation.
  - E. If the product has been dropped and the telephone base and/or handset has been damaged.
  - F. If the product exhibits a distinct change in performance.
15. Avoid using a telephone (other than cordless) during an electrical storm. There is a remote risk of electric shock from lightning.
16. Do not use the telephone to report a gas leak in the vicinity of the leak. Under certain circumstances, a spark may be created when the adapter is plugged into the power outlet, or when the handset is replaced in its cradle. This is a common event associated with the closing of any electrical circuit. The user should not plug the phone into a power outlet, and should not put a charged handset into the cradle, if the phone is located in an environment containing concentrations of flammable or flame-supporting gases, unless there is adequate ventilation. A spark in such an environment could create a fire or explosion. Such environments might include: medical use of oxygen without adequate ventilation; industrial gases (cleaning solvents; gasoline vapors; etc.); a leak of natural gas; etc.
17. Only put the handset of your telephone next to your ear when it is in normal talk mode.
18. The power adapters are intended to be correctly oriented in a vertical or floor mount position. The prongs are not designed to hold the plug in place if it is plugged into a ceiling, under-the-table or cabinet outlet.

19. Use only the power cord indicated in this manual.
20. For pluggable equipment, the socket-outlet shall be installed near the equipment and shall be easily accessible.
21. In wall mounting position, make sure to mount the telephone base on the wall by aligning the eyelets with the mounting studs of the wall plate. Then slide the telephone base down on both mounting studs until it locks into place. Refer to the full instructions in **Deskset Installation** in the User Guide.
22. CAUTION: Keep small metallic objects such as pins and staples away from the handset receiver.

## SAVE THESE INSTRUCTIONS

# Compliance

## FCC part 15

---

This device complies with Part 15 of the FCC rules. Operation is subject to the following two conditions: (1) This device may not cause harmful interference, and (2) this device must accept any interference received, including interference that may cause undesired operation.

This equipment has been tested and found to comply with the limits for a Class A digital device, pursuant to Part 15 of the FCC Rules. These limits are designed to provide reasonable protection against harmful interference when the equipment is operated in a commercial environment. This equipment generates, uses, and can radiate radio frequency energy and, if not installed and used in accordance with the instruction manual, may cause harmful interference to radio communications. Operation of this equipment in a residential area is likely to cause harmful interference in which case the user will be required to correct the interference at the user's expense.

This Class A digital apparatus complies with Canadian requirements:  
CAN ICES-3 (A)/NMB-3(A).

Cet appareil numérique de la classe A est conforme à la norme NMB-003 du Canada.

**WARNING:** Changes or modifications to this equipment not expressly approved by the party responsible for compliance could void the user's authority to operate the equipment.

## Industry Canada

---

This device complies with Industry Canada licence-exempt RSS standard(s). Operation is subject to the following two conditions: (1) this device may not cause harmful interference, and (2) this device must accept any interference received, including interference that may cause undesired operation of the device.

Privacy of communications may not be ensured when using this telephone.

The term "IC:" before the certification/registration number only signifies that the Industry Canada technical specifications were met.

This product meets the applicable Industry Canada technical specifications.

# About this Guide

This quick start guide provides a reference for the external features of the phone and basic installation instructions.

Please refer to the VSP735 Deskset User Guide for complete installation and operation instructions. You can download the guide from

**businessphones.vtech.com.**

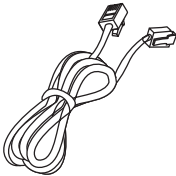
For customer service or product information, visit our website at **businessphones.vtech.com** or call **1 (888) 370-2006.**

## Parts Checklist

Your telephone package contains the following items. Save your sales receipt and original packaging in the event warranty service is necessary.



Quick Start Guide



Ethernet cable



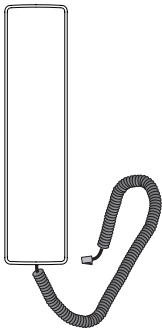
Replacement  
key label card



Deskset base



Deskset stand



Handset and  
handset cord

# Quick Reference Guide

**SCREEN**

Displays call information, soft key labels, and deskset menus.

**MENU**

Press to display the deskset menu.

**MESSAGE WAITING indicator**

Flashes when you have a new voice message.

**MESSAGE**

Press to display the message menu.

**CALL HISTORY**

Press to view caller ID information.

**DIRECTORY**

Press to view directory information.

**SOFT KEYS**

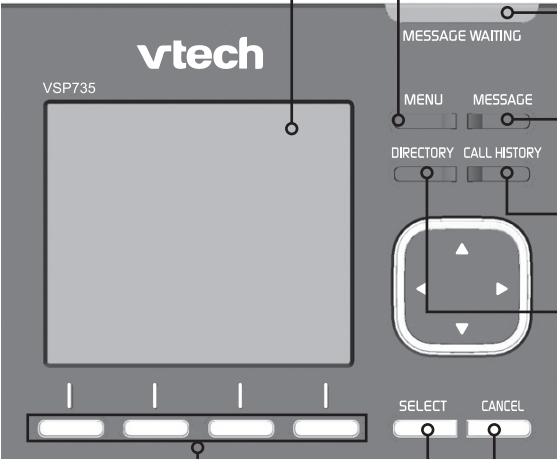
Perform the actions indicated by the on-screen labels.

**SELECT**

Press to select a menu item or save an entry or setting.

**CANCEL**

While in a menu, press to cancel an operation and exit the menu.

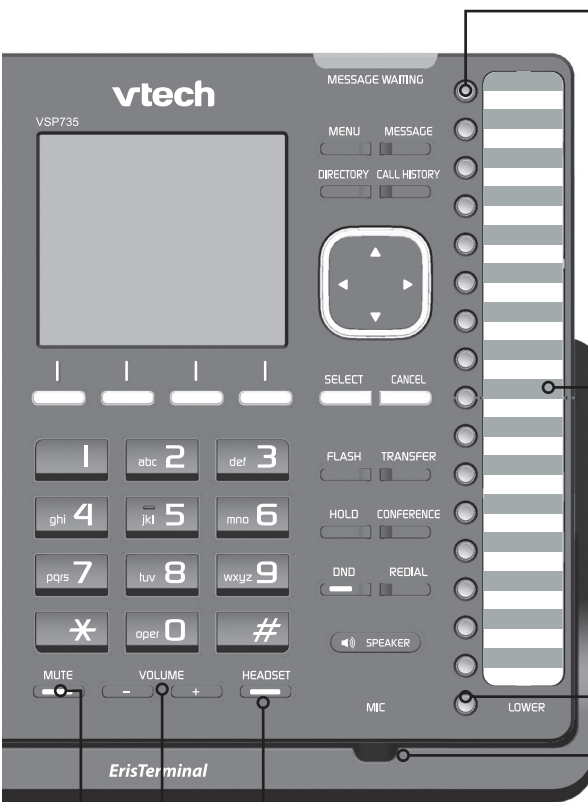


**NAVIGATION KEYS**

While in menus, press ▼ or ▲ to scroll through the menu, highlight items or change settings. While entering names, numbers or other text, press ◀ or ▶ to move the cursor left or right.

# Quick Reference Guide

## External Features



**Programmable keys**  
Perform various functions and access various features.  
For example:

- Press to access a line to make a call.
- Press to dial a monitored extension or a quick-dial number.
- Press to answer a ringing call on any line or monitored extension.

**Key label card**  
To write on the key label card, pull out the card from under the plastic cover.

**LOWER**  
Press to access the second level (alternate function) of a programmable key.

**Corded headset input**  
(on side)

**MIC**

**HEADSET**  
When a corded headset is connected to the phone, press to make, answer or hang up a call.

**FLASH**  
During a call, press to answer an incoming call when you receive a call waiting alert.

**HOLD**  
Press to put an outside call on hold.

**DND**  
Press to enter do-not-disturb mode.

**TRANSFER**  
Press to transfer a call to an extension.

**CONFERENCE**  
Press to add another extension or outside line to an existing call.

**REDIAL**  
Press to view list of previously dialed numbers.

**SPEAKER**  
Press to turn the speakerphone on or off.

**MUTE**  
During a call, press to mute the microphone.

**VOLUME +**  
During a call, press to adjust the listening volume.  
During message playback, press to adjust the playback volume.  
When the phone is idle, press to adjust the ringer volume.

**FLASH**  
During a call, press to answer an incoming call when you receive a call waiting alert.

**HOLD**  
Press to put an outside call on hold.

**DND**  
Press to enter do-not-disturb mode.

**TRANSFER**  
Press to transfer a call to an extension.

**CONFERENCE**  
Press to add another extension or outside line to an existing call.

**REDIAL**  
Press to view list of previously dialed numbers.

**SPEAKER**  
Press to turn the speakerphone on or off.

## Deskset Installation

This section assumes that your network infrastructure is established and that your IP PBX phone service has been ordered and configured for your location. For more information about installation options and phone setup, see the VSP735 Deskset User Guide and the VSP735 Deskset Administrator and Provisioning Manual, available at **[businessphones.vtech.com](http://businessphones.vtech.com)**.

You can power the phone using a compatible VTech power adapter or using Power over Ethernet (PoE) from your network. (The phone requires PoE Class 3.) If you are not using PoE, install the phone near a power outlet not controlled by a wall switch. The phone can be placed on a flat surface or vertically mounted on the wall.

Avoid placing the deskset too close to:

- Communication devices such as television sets, DVD players, or other cordless telephones
- Excessive heat sources
- Noise sources such as a window with traffic outside, motors, microwave ovens, refrigerators, or fluorescent lighting
- Excessive dust sources such as a workshop or garage
- Excessive moisture
- Extremely low temperature
- Mechanical vibration or shock such as on top of a washing machine or work bench.

**Note:** The Deskset shall be installed and used such that parts of the user's body other than the hands are maintained at a distance of approximately 20 cm (8 inches) or more.

## Installing the phone

---



Make sure you plug in the Ethernet cable before powering up the phone.

1. Attach the stand.
  - a. Lift the kickstand and flip it back. Let it rest at its maximum angle.

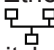


- b. Snap the stand onto the two snap points on the deskset base.
2. Plug the end of the coiled handset cord into the jack on the left side of the telephone.



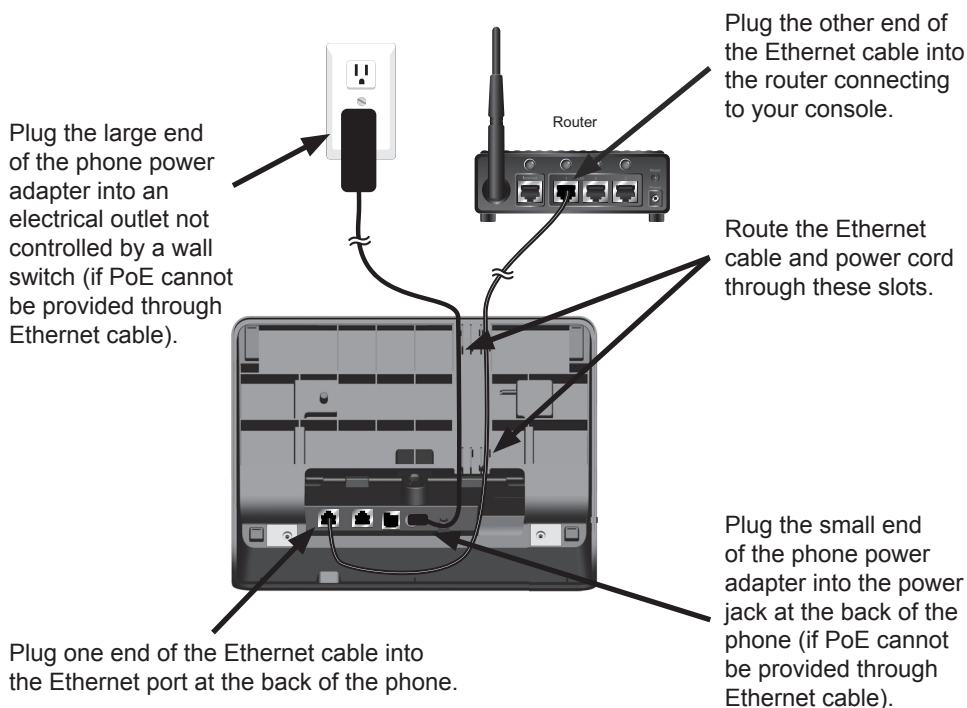
- -
3. Lift the deskset base to the desired angle. There are three pairs of grooves designed to hold the phone at different angles for optimum visibility.
4. Snap the kickstand into the desired grooves until it locks into place.



5. Plug one end of the Ethernet cable into the Ethernet port on the rear of the deskset (marked by ) , and plug the other end of the cable into your network router or switch.

If the deskset is not using power from a PoE-capable network router or switch:

- a. Connect a compatible VTech power adapter to the deskset power jack.
- b. Plug the power adapter into an electrical outlet that is not controlled by a wall switch.



## IMPORTANT INFORMATION

1. Use only a compatible VTech power adapter.  
To order a replacement power adapter, visit our website at **[businessphones.vtech.com](http://businessphones.vtech.com)** or call **1 (888) 370-2006**.
2. The power adapter is intended to be correctly oriented in a vertical or floor mount position. The prongs are not designed to hold the plug in place if it is plugged into a ceiling, under-the-table or cabinet outlet.

If there is a networked computer and no extra Ethernet wall ports near the phone, then the phone and PC can share the same network connection.

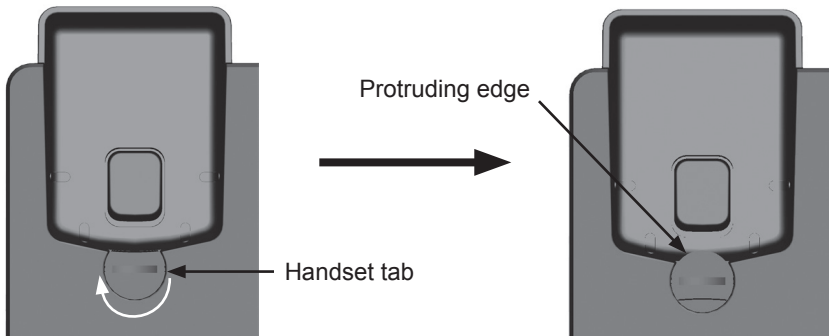
### To share a network connection with a PC:


1. Plug a Cat.-5 Ethernet cable into the PC port on the phone (marked by **PC**).
  2. Plug the other end of the Cat.-5 Ethernet cable into your computer's Ethernet port.
- If a PC is connected to your network through a phone, any phone resets and power or network interruptions will disrupt the PC's connection to the network.

### To mount the phone on the wall

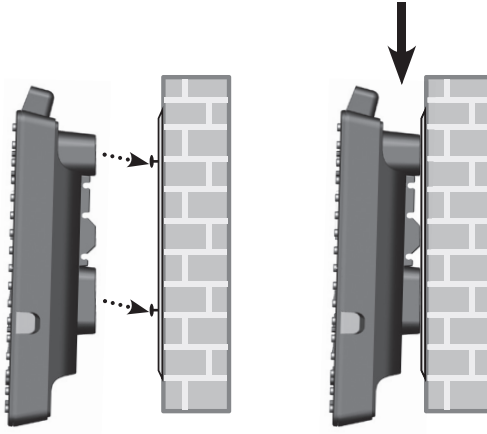
---

1. Prepare the wall-mount screws. The deskset will fit onto wall-mount screws with centers  $3\frac{1}{4}$  inches (8.2 cm) or 4 inches (10.2 cm) apart. Most standard wall plates have screw centers  $3\frac{1}{4}$  inches (8.2 cm) apart.
2. If the deskset stand is attached, detach the stand.
  - a. Lift the phone front panel to release the kickstand from the grooves.
  - b. Snap the stand off the two snap points on the deskset base.
3. Put the corded handset aside. Use a coin to rotate the handset tab 180 degrees. The protruding edge holds the corded handset when the phone is mounted on the wall.



4. Plug one end of the Ethernet cable into the Ethernet port on the rear of the deskset (marked by ).
5. If the deskset is not using power from a PoE-capable network router or switch, connect a compatible VTech power adapter to the deskset power jack.

6. Align the upper wall mounting hole on the back of the phone with the upper tab of the standard wall plate. Make sure the lower wall mounting hole on the mounting bracket also aligns with the lower tab of the standard wall plate. Push the phone down until it clicks securely in place.



7. Bundle the Ethernet cable and power adapter cord neatly with twist ties.
8. Plug the Ethernet cable into the router your console is connected to and the power adapter into an electrical outlet not controlled by a wall switch if you are not using PoE.

### Wall mount to tabletop installation

---

To change the phone from the wall mount position to tabletop position, follow the steps below.

1. If the Ethernet cable and power adapter cord are bundled, untie them first.
2. Push the phone up to remove it from wall. Unplug the Ethernet cable from the router and the power adapter from the power outlet.
3. See “Installing the phone” on pages 10 to 12.



# Maintenance

## Taking care of your telephone

- Your telephone base contains sophisticated electronic parts, so you must treat it with care.
- Avoid rough treatment.
- Place the corded handset down gently.
- Save the original packing materials to protect your telephone base if you ever need to ship it.

## Avoid water

- You can damage your telephone base if it gets wet. Do not use the corded handset in the rain, or handle it with wet hands. Do not install the telephone base near a sink, bathtub or shower.

## Electrical storms

- Electrical storms can sometimes cause power surges harmful to electronic equipment. For your own safety, take caution when using electric appliances during storms.

## Cleaning your telephone

- Your telephone base has a durable plastic casing that should retain its luster for many years. Clean it only with a soft cloth slightly dampened with water or a mild soap.
- Do not use excess water or cleaning solvents of any kind.

Remember that electrical appliances can cause serious injury if used when you are wet or standing in water. If the telephone base should fall into water, DO NOT RETRIEVE IT UNTIL YOU UNPLUG THE POWER CORD AND TELEPHONE LINE CORDS FROM THE WALL, then pull the unit out by the unplugged cords.

# Technical Specifications

RF frequency band	1921.536–1928.448 MHz
Channels	5
Operating temperature	32–122 °F (0–50 °C)
AC adapter output voltage	5.0 Vdc @ 1000 mA
Ethernet network ports	GigE RJ-45 ports



VTECH COMMUNICATIONS LTD.

A member of THE VTECH GROUP OF COMPANIES.

Distributed in the U.S.A. by VTech Communications Inc., Beaverton, Oregon 97008.

VTech is a registered trademark of VTech Holdings Limited.

ErisTerminal® is a registered trademark of VTech Communications Inc.

Specifications are subject to change without notice.

Copyright © 2014 for VTECH COMMUNICATIONS LTD. All rights reserved.

Printed in China. Version 5, 08/15